

Bourke Health Service – Overview

1.1 Location & Demographics

Located 789 km northwest of Sydney, Bourke is situated on the Darling River 110 m above sea level. It is, by any measure, a thriving country town with a population around 3500 and a sense of prosperity which is the result of its geographic importance as the centre of a large wool, cotton and citrus area

1.2 History

The Greater Western Area Health Service (GWAHS) started operation on 1 January 2005.

Greater Western Area Health Service (GWAHS) is the largest health service in NSW and has 108 facilities, including 33 public hospitals, 16 Multipurpose and 59 Community Health Centres. The area lies west of the Blue Mountains, extending from Bathurst in the east to the northern and southern state borders covering 444,568 square kilometres, representing 55% of New South Wales. The Area has 28 Local Government Areas, of which nine are classified as 'remote' or 'very remote'. The main industries in the area are agriculture, retail trade and community services.

GWAHS has a population of approximately 294,000 people, with many people living in the Local Government Areas of Bathurst

1.3 Service Information

Bourke Health Service consists of the Bourke Multipurpose Service (Hospital and Community/Primary Health), the Mental Health and Drug and Alcohol Program and Wanaaring and Enngonia Health Clinics.

Bourke Hospital is a 35-bed facility providing general medical, minor surgical, low risk obstetric, emergency, operative, aged care and palliative care services.

Services are provided by a multidisciplinary team consisting medical and nursing staff, allied health and support services.

Local General Practitioners provide visiting medical officer support to the health service.

A number of visiting specialist medical staff from Dubbo and Sydney attend the Health Service on a regular basis. Some of these services include:

- Orthopaedics
- Dermatology
- Psychiatry
- Ear, Nose & Throat
- Endocrinology
- Ophthalmology
- Paediatrics
- Dietician
- Speech Therapy

Bourke Health Service works in partnership with a number of services, for example Bourke Aboriginal Health Service, Kinni Health, Darling River Medical Centre and the Outback Division to provide health services to the community.

The NSW Ambulance Service is co-located in the Bourke Multipurpose Centre.

1.4 Staffing Profile	FTE
General Wards (RNs, ENAs, AINs)	28.10
Radiology	1.00
Physiotherapy	1.00
Palliative Care	0.60
Catering	9.80
Linen/Laundry	1.00
Wardspersons	6.00
SexualHealth	1.00
MentalHealth	5.00
Wanaaring	1.25
CommunityHealth	6.80
CommunityMidwife	1.00
PANOC	1.00
AboriginalHealth	4.00
AboriginalLiaison Officer	1.00
Early Childhood Intervention	1.00
Sexual Assault Service	1.00
HACC	1.00
Group Enrolled Nurse School	2.00
Administration	7.00
Maintenance	4.00
TOTAL	82.55

Bourke Multipurpose Service contact details:

Address: 26 Tarcoon Street, BOURKE NSW 2840

Tel. (02) 6870 8888 Fax. (02) 6870 8844

The **Bourke Primary Community Health Service** consists of two teams – Primary and Community Health (PaCH) and Mental Health and Drug and

Alcohol. The PaCH Team consists of a 20 member team covering a variety of health issues, for example, sexual health, sexual assault counselling, womens health, aboriginal health, aged care, palliative care, diabetes, health promotion etc. The Bourke Primary Health Service is also responsible for two primary health care outposts – Wanaaring and Enngonia.

Wanaaring Health Clinic is located 200km west of Bourke and travel is on an unsealed road. Wanaaring has a town based population of approx. 75 people with twice this number estimated to be living on surrounding properties. This is a sole nurse practitioner post. The nurse practitioner provides a comprehensive range of community health and emergency services. Bourke Primary and Community Health Staff also visit Wanaaring. The Royal Flying Doctor Service, Broken Hill Base provides a medical service weekly, plus dental, early childhood and women's health service on a regular basis.

Enngonia Health Clinic is located 100km north of Bourke on route to Cunnamulla, Qld. Enngonia is associated with two bushranger stories, Captain Starlight and Midnight. Today Enngonia has a population of approximately 100 people of which 90% are Aboriginal.

Currently no health staff reside at Enngonia and Bourke PaCH staff visit one day every second week and on a needs basis. There is also a medical service once a fortnight.

Bourke Primary Community Health Service contact details:

Address: 26 Tarcoon Street BOURKE NSW 2840

Tel (02) 6870 8883 Fax (02) 6870 8898

Staff accommodation

There are 5x 2 bedroom cabins located on the hospital site and the health service rents 2x1 bedroom apartments in the community.

Suitable rental accommodation in the town is in short supply and can be difficult to find. Bourke Health Service does assist staff in trying to locate suitable accommodation.

Professional Development

Professional development, ongoing education and update opportunities are available to all staff.

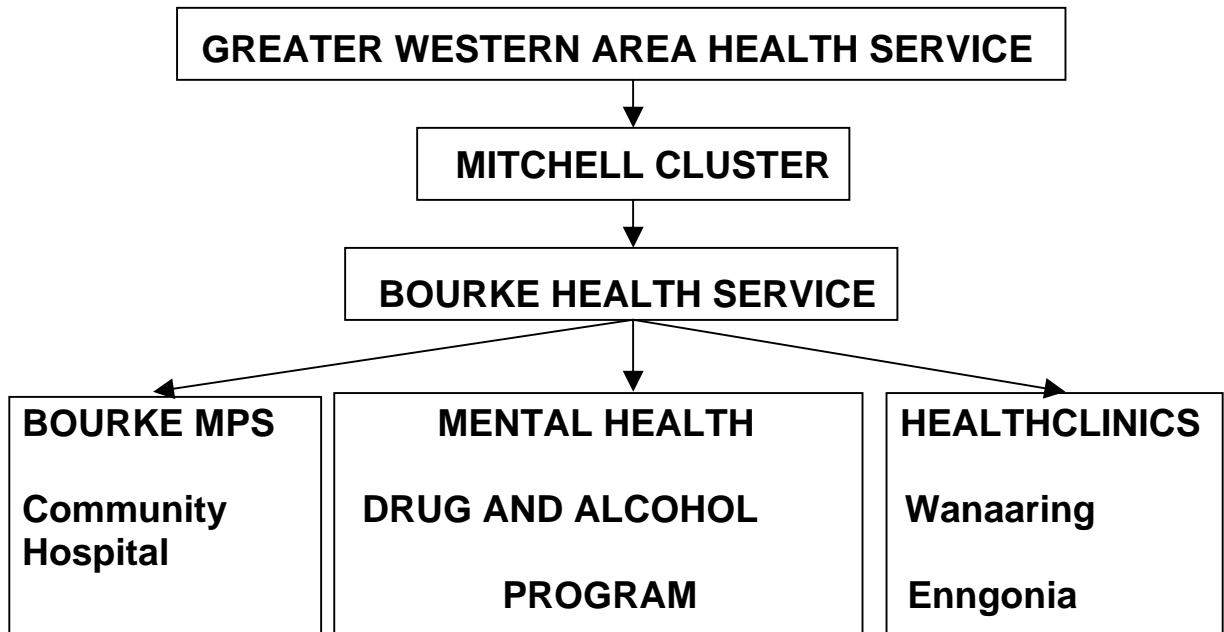
Bourke Health Service supports a dynamic inservice program with local and visiting specialists.

Satellite broadcasting is well utilised by staff.

All visiting specialists provide professional support and ongoing education as included in their role.

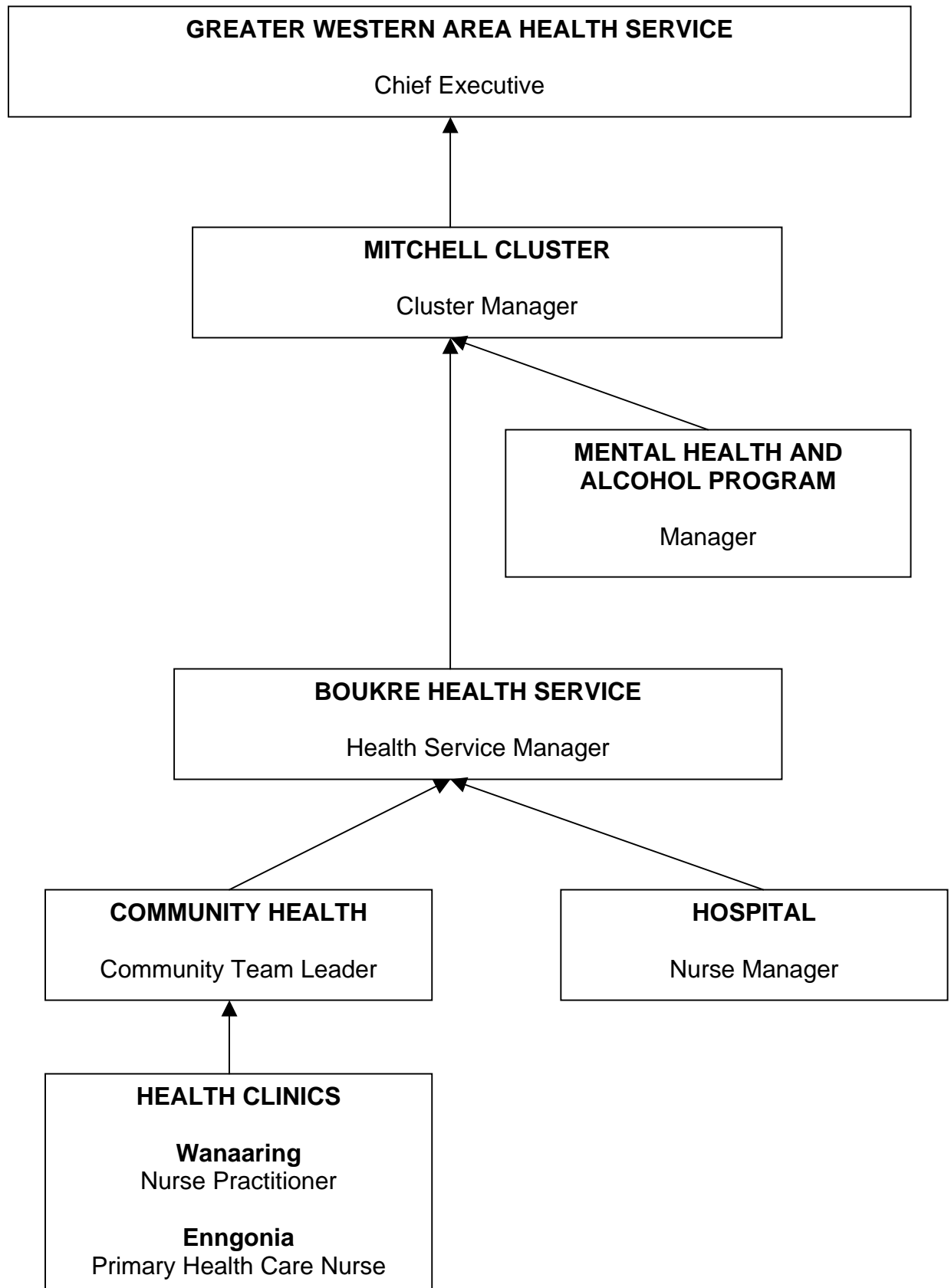
1.5 Organisational Structure

STRUCTURE



1.6 Reporting Structure

REPORTING STRUCTURE



1.7 Departmental Heads

Health Service Manager	Dr Sally Torr
Acting Nurse Manager (Hospital)	Wendy Bostock
Nurse Unit Manager	Vacant
Acting Mental Health Team Manager	Pat Canty
Primary and Community Health Manager	Karin Regan
Acting Administrative Team Leader	Kerrie Brown
Hotel Services Co-ordinator	Jannelle Farrell
Maintenance Co-ordinator	Greg Milgate
Stores	John Webb
Radiology Manager	Satya Moorthy

1.8 Committees and Working Parties

1.8.1 Committees

Committee Title	Frequency
Health Council	Monthly
Occupational Health & Safety	Monthly
Departmental Heads	Monthly
Patient Safety and Quality of Care	Monthly
VMO – morbidity and mortality	Quarterly and prn

1.8.2 Working Parties

Working Party Title	Frequency
Residential Access	Prn
Education and Training	Six monthly and prn
Recruitment and Orientation	Six monthly and prn

1.8.3 Recognised meetings

Title	Frequency
Executive Team	Weekly
PaCH Team Briefings	Weekly
PaCH Redesign	Monthly
Mental Health Team Briefings	Daily
Nursing (Hospital) Handover	Per shift
Nursing	Monthly